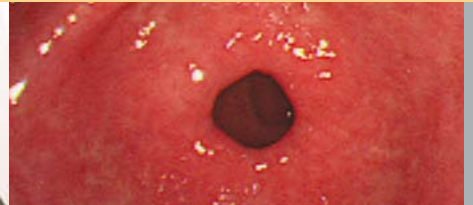


High-Quality Optics Fibre Endoscopy



Duodenoscope

Precise and hygienic:
perfect conditions for
sensitive areas.

PENTAX

High-Quality Optics Fibre Duodenoscopy



Trust in high-quality and proven technology for the sensitive areas of duodenoscopy. With the following unique performance characteristics: outstanding optical quality, exemplary ergonomics, innovative design and maximum hygiene standards.

Outstanding performance characteristics



Maximum Working Comfort

- Up to 120° deflection and 80° angle of view for the best possible navigation and viewing even in hard-to-reach areas.
- Generous dimension of the working channel permit a wide range of diagnostic and therapeutic uses.
- Very comfortable and hygienic handling thanks to optimum positioning of the ocular and suction channel.

Unique Hygiene

- PENTAX CleanCap System: the highest international hygiene standard thanks to the detachable distal cap for safe and rapid mechanical cleaning of the air and water channel.
- Exclusive to PENTAX duodenoscopes: completely sealed guide wire channel for 100% hygiene.

Excellent picture quality

- High-Quality Optics system for extra-wide 80° view angle.
- Excellent video imaging and documentation possibilities through simple EFER Mucam video camera connection.
- PENTAX Superfine Fibre Technology gives the highest optical image resolution and high colour discrimination.

PENTAX Quality & Service Programme

- Exceptional quality and longevity.
- Innovative detail solutions for more convenience and safety.
- All-round 100% service plan: consulting, financing, technical service, training.
- PENTAX fibre duodenoscopes are compatible with the EFER Mucam video system, for long-term investment security.

Diagnostic/Therapeutic Fibre Duodenoscope

Type	FD-34W
Angle of view (°)	80 (retro 5)
Focus (mm)	4-70
Tip deflection (°) up/down right/left	120/90 110/90
Ø Insertion tube (mm)	11.3
Ø Distal end (mm)	13.0
Ø Instrument channel (mm)	4.2
Working length (mm)	1250
Total length (mm)	1595

PENTAX Europe GmbH
LIFE CARE
Julius-Vosseler-Straße 104
22527 Hamburg
Germany
Tel.: +49 40 / 5 61 92 - 0
Fax: +49 40 / 5 60 42 13
E-mail: medical@pentax.de

PENTAX U.K. Limited
LIFE CARE
Pentax House
Heron Drive, Langley
Slough SL3 8PN
United Kingdom
Tel.: +44 17 53 / 79 27 23
Fax: +44 17 53 / 79 27 94
E-mail: lifecare.info@pentax.co.uk

PENTAX France S.A.S.
LIFE CARE
112 quai de Bezons
P. B. 204
95106 Argenteuil
France
Tel.: +33 1 / 30 25 75 75
Fax: +33 1 / 30 25 75 76
E-mail: medical@pentax.fr

PENTAX Nederland B.V.
LIFE CARE
Lage Mosten 35
4822 NK Breda
Netherlands
Tel.: +31 76 / 5 31 30 31
Fax: +31 76 / 5 31 30 00
E-mail: lifecare@pentax.nl

PENTAX Italia S.r.l.
LIFE CARE
Via Dione Cassio, 15
20138 Milano
Italy
Tel.: +39 / 02 50 99 58 1
Fax: +39 / 02 50 99 58 60
E-mail: marketing.lifecare@pentaxitalia.it

HOYA Corporation
PENTAX Tokyo Office
2-36-9, Maeno-cho
Itabashi-Ku
174-8639 Tokyo
Japan
Tel.: +81 33 / 9 60 51 55
Fax: +81 35 / 3 92 67 24

www.pentaxeurope.com



HOYA Corporation · ISO 9001/EN ISO 13485 certified

Your PENTAX sales representative:

PENTAX