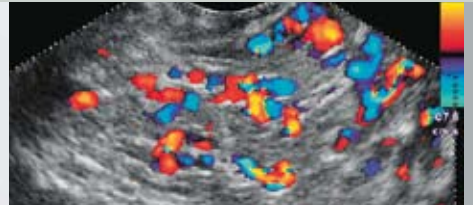


High-Resolution Ultrasound Endoscopy



Gastrosopes

Reference class:
technology, imaging, possibilities

PENTAX

High-Resolution Ultrasound Video / Fibre Endoscopy



The first radial ultrasound endoscope in the world with integrated electronic scanning technology sets new standards in imaging. Together with electronic longitudinal ultrasound endoscopes from PENTAX, which are presented here for the first time, this programme is a great step forward in diagnosis and therapy.

Outstanding performance characteristics



Maximum Working Comfort

- Highly flexible tube for more delicate and precise navigation than with conventional endoscopes.
- Easy to prepare application area through one touch balloon control, for filling with water and removal by suction.
- Very pleasant and easy to operate thanks to ergonomically optimized control body.
- Extra room for manoeuvre/safety due to the unique PENTAX anti-loop connector: up to 180° axially rotatable connector head.*

Excellent Image & Image Processing

- Unique high-resolution imaging with electronic HITACHI high performance scanner.
- Optimized detection, staging and therapy, thanks to possibilities of combining scanning system, Colour Doppler and Colour-flow-angio.
- Greatest possible visual field for optimal navigation safety. Radial type: 120°, longitudinal type: 105°-130°.
- Clear angiological basis for evaluation, even for patients with weak blood flow.

* Only for video endoscopes.

Type	Fibre			Video		Video
	FG-34UX	FG-36UX	FG-38UX	EG-3630U	EG-3830UT	EG-3630UR
Direction of viewing field	60° (forward oblique)			60° (forward oblique)	forward oblique	Forward
Angle of view (°)	105			130	120	120
Focus (mm)	3-100			3-100	5-100	5-100
Tip deflection (°) up/down right/left	130/130 120/120			130/130 120/120		130/60 60/60
Ø Insertion tube (mm)	11.5	12.1	12.8	12.1	12.8	12.1
Distal end US probe (mm)	12x12.8	12x12.8	12x12.8	12x12.8	12.5x12.5	12.0
Distal end optic (mm)	Ø 12.5	Ø 13.0	Ø 13.5	Ø 13.0	Ø 14.2	Ø 12.0
Ø Instrument channel (mm)	2.0	2.4	3.2	2.4	3.8	2.4
Elevator lever	-	yes	-	yes		-
Working length (mm)	1250			1250		1250
Total length (mm)	1600			1575		1575
Scanning angle (°)	100			100	120	270
Frequency range	5-7.5 MHz			5-10 MHz		5-10 MHz
Scanning direction	Longitudinal			Longitudinal		Latitudinal
Scanning mode	B mode/Colour Doppler/ Pulse Doppler			B mode/Colour Doppler/ Pulse Doppler		B mode/Colour Doppler/ Pulse Doppler

PENTAX Europe GmbH
LIFE CARE
Julius-Vosseler-Straße 104
22527 Hamburg
Germany
Tel.: +49 40 / 5 61 92 - 0
Fax: +49 40 / 5 60 42 13
E-mail: medical@pentax.de

PENTAX U.K. Limited
LIFE CARE
Pentax House
Heron Drive, Langley
Slough SL3 8PN
United Kingdom
Tel.: +44 17 53 / 79 27 23
Fax: +44 17 53 / 79 27 94
E-mail: lifecare.info@pentax.co.uk

PENTAX France S.A.S.
LIFE CARE
112 quai de Bezens
P. B. 204
95106 Argenteuil
France
Tel.: +33 1 / 30 25 75 75
Fax: +33 1 / 30 25 75 76
E-mail: medical@pentax.fr

PENTAX Nederland B.V.
LIFE CARE
Lage Mosten 35
4822 NK Breda
Netherlands
Tel.: +31 76 / 5 31 30 31
Fax: +31 76 / 5 31 30 00
E-mail: lifecare@pentax.nl

PENTAX Italia S.r.l.
LIFE CARE
Via Dione Cassio, 15
20138 Milano
Italy
Tel.: +39 / 02 50 99 58 1
Fax: +39 / 02 50 99 58 60
E-mail: marketing.lifecare@pentaxitalia.it

HOYA Corporation
PENTAX Tokyo Office
2-36-9, Maeno-cho
Itabashi-Ku
174-8639 Tokyo
Japan
Tel.: +81 33 / 9 60 51 55
Fax: +81 33 / 3 92 67 24

www.pentaxeurope.com



HOYA Corporation · ISO 9001/EN ISO 13485 certified

Your PENTAX sales representative:

PENTAX